

Digi DataFire

ISDN LAN Adapter



The Digi DataFire™ is quite simply the finest single-user remote LAN connectivity solution on the market today. It integrates an ISDN terminal adapter/network interface card with a line terminator (NT1) to provide the high-speed access you demand with breakthrough simplicity and affordability.

Engineered for ease of use, the DataFire is surprisingly easy to install and maintain. There's no need for a line terminator or power supply, so installation is as simple as placing the card in an open expansion slot of any ISA-bus PC and connecting it directly to an ISDN Basic Rate Interface (BRI) phone line. This revolutionary design reduces overall equipment cost as well.

DataFire supports one 128 Kbps or two 64 Kbps connections. Plus, it features PPP (Point-to-Point Protocol) support. This ensures interoperability with other types of ISDN devices and facilitates connections with the Internet and other outside resources. DataFire integrates easily with Microsoft® Windows NT,™ Windows for Workgroups and Novell® NetWare™ operating systems. In addition, you get Digi's Link Optimizing Software that reduces line charges by up to 60 percent.

For applications requiring personal high-speed remote LAN connections, you won't find an easier, more affordable solution than the Digi DataFire. Review all the features and specifications, then put DataFire to work for you and your company.



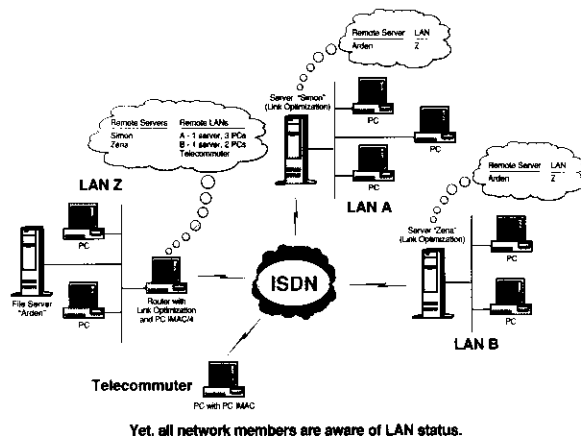
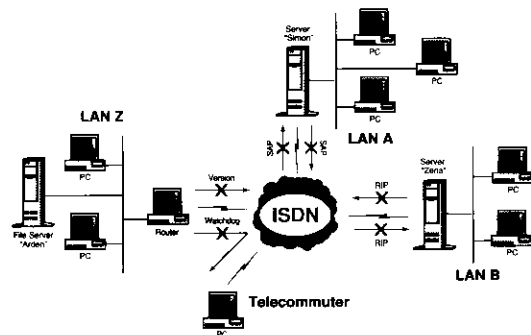
Digital Connectivity Solutions for the Price of Analog. And Only From Digi.

The Cost-Effectiveness of ISDN

If you're looking for a way to increase data communications speed while minimizing line costs, the solution is Digi and ISDN (Integrated Services Digital Network).

ISDN technology combines the fast communications speed of a dedicated line with the cost savings of a switched dial up service. This allows you to connect with many different sites on an as-needed basis and only pay for the line time you actually use.

Reduce communications charges by up to 60 percent. Digi's DataFire ISDN LAN adapter card features Link Optimizing Software that minimizes monthly line charges. This advancement works with the network operating system to eliminate unnecessary WAN traffic.



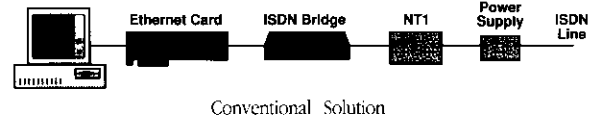
Link Optimizing Software reduces communications charges by up to 60%.

Ordinarily, servers broadcast LAN administration packets across the network every few seconds which can keep communication lines open all day. Digi's Link Optimizing Software was engineered to distinguish between this LAN administration chatter and user data. The software opens the line only for user data transmissions. When the transfer is complete, DataFire automatically closes the link. The result is a solution that can reduce communications charges by up to 60 percent!

The Single-User Remote Access Solution

The DataFire is one of the most cost-effective ways to equip individual PCs with high-speed ISDN communications capabilities. And, with installation that's as easy as sliding the card into an open expansion slot and connecting it to a phone line, DataFire is one of the most convenient solutions as well.

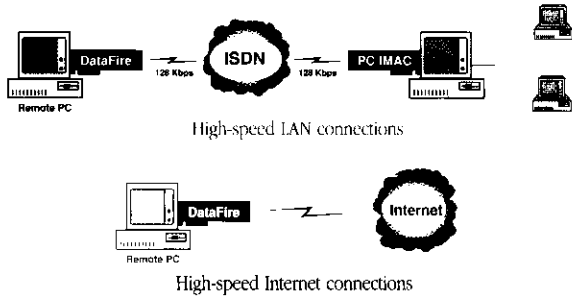
DataFire Versus Conventional Solution



DataFire's single-card design reduces equipment costs by replacing the Ethernet card, bridge, NT1 and power supply that are required with conventional solutions. This breakthrough makes DataFire a smart, cost-effective alternative for any business.

This insightful blend of simplicity and affordability makes DataFire the ideal remote LAN access solution for telecommuters, one- or two-person branch offices or

other locations where you only need to provide a single user with advanced ISDN communications technology.



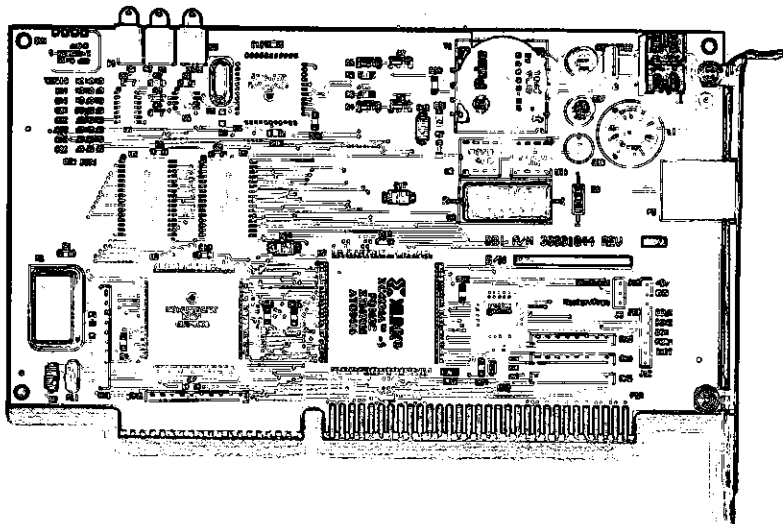
DataFire combines an ISDN terminal/network interface with a line terminator to provide high-speed connections to remote LANs. It also provides quick access to the Internet and other on-line services.

Fast, Simple Connections

Immediate, transparent connections are the mark of a quality remote access solution. Digi DataFire delivers by allowing remote users to work as if they were locally attached to the central LAN. There are no new commands to learn, no special software to run and no hassles. In short, users literally can't tell the difference between local and remote connections.

128 Kbps Throughput. A study at West Virginia University concluded that a minimum speed of 80 Kbps makes users feel as though they are locally attached to a network. When coupled with ISDN lines, DataFire provides transmission speeds of 128 Kbps and higher to provide the speed and convenience network users demand.

Instant Connections. DataFire and ISDN provide the fastest, most transparent connections



possible. In fact, ISDN calls connect in just a quarter of a second, compared to 30-90 seconds for a modem. This means that in the time it takes to establish a modem connection you can connect, download a word processing file and move on to the next task.

Easy Administration. Small remote offices and telecommuters generally have minimal networking expertise which can leave them stranded if network problems occur. With DataFire, network administration can be handled over the ISDN link from any PC on the network, anytime of the day or night. This allows the central LAN administrator to monitor, setup and remove connections remotely, eliminating the need for dedicated LAN personnel at each site.

Advanced Digi Features

B Channel Support. Digi's DataFire supports two ISDN B channels that can be used separately to support simultaneous 64 Kbps connections or aggregated to provide a single 128 Kbps connection.

Link Optimizing Software. Digi's software reduces line charges by up to 60 percent by eliminating unnecessary connections.

On-Demand Dialing. This feature simplifies access to distant networks by eliminating the need for the user to enter a phone number or issue a dialing command.

Point-to-Point Protocol (PPP).

Connecting DataFire with other brands of ISDN bridges, routers or terminal adapters is easy through PPP. This feature also facilitates connections with the Internet and on-line services.

Features/Specifications

Features

- Supports two B channels and one D channel
- Supports "nailed up" permanent circuit-switched B channel
- Compatible with 64 Kbps, 56 Kbps and ISDN voice circuit-switched calls
- Supports Q.931 and Q.921 (LAPD), HDLC and proprietary protocols on voice and circuit-switched data channels
- Compatible with all CCITT/ANSI BRI ISDN central office switches, including AT&T 5E, Northern Telecom DMS 100, Siemens, British Telecom, and others
- Connects between ISDN switches using digital dial-up voice lines and digital trunking
- Data compression for greater throughput
- Point-to-Point Protocol (PPP) support for interoperability
- Transparent connection management – no dialing commands necessary
- English language configuration and control
- Programmable operation
- Automatic fallback from circuit-switched 64 Kbps calls to receive 56 Kbps calls or send at 56 Kbps over ISDN voice calls

I/O Interfaces

- ISDN U interface accepts RJ-45 or RJ-11 connectors

Network Interface

- Supports client LAN software for Novell, Microsoft RAS, and Internet PPP server types
- Supports DOS ODI 3.11 and DOS NDIS 2.0
- Frame Rate: 250 packets per second over two B channels
- 8 byte I/O port, 7 available addresses
- One software vector, 60H-80H
- Interrupt vector (IRQ) 3, 5, 7, 10, 11, 12, 15 — can be run without IRQ
- No memory required
- 8 or 16 bit slot

Environmental Requirements

- Ambient temperature: 50° to 131° F (10° to 55° C)
- Relative humidity: 5% to 90% non-condensing
- Altitude: 0 to 12,000 feet (0 to 4000 meters)

Power Requirements

- +5 VDC 0.5 amp, maximum

DigiWARE Software Support



SUPPORTED MICROSOFT PRODUCTS

- Windows NT 3.5
- Windows for Workgroups 3.11

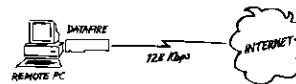


SUPPORTED NOVELL PRODUCTS

- NetWare ODI (client)

For information on the support of other operating systems, contact Digi.

Product Applications



DataFire high-speed Internet connection



DataFire high-speed LAN connection

For more information on the Digi PC IMAC server-side ISDN LAN adapter card, contact Digi.

Dimensions

- DataFire for ISA-bus computers: 7.3" x 4.2"

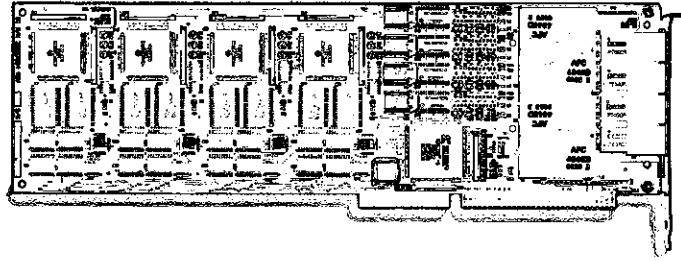
Warranty and Technical Support

Digi safeguards your buying decision with one of the strongest service and support packages in the industry. You get a comprehensive 5-year warranty plus unlimited telephone technical support. This is your assurance that you will have a fully functional solution for the life of your system.



Digi DataFire S/T

ISDN LAN Adapters



Digi's DataFire ISDN solutions provide remote users and branch office LANs with reliable, high speed access to the corporate network. DataFire LAN adapters connect with Basic Rate Interface (BRI) lines, each of which support two 64Kbps B channels and one 16Kbps D channel. The B channels can be used independently for two simultaneous 64Kbps connections, or can be aggregated for a single 128Kbps connection. These LAN adapters feature S/T type (four wire) interfaces.

DataFire S/T Client

The DataFire client adapter is designed to provide individual computer users with high-speed access to a central LAN, to the Internet and to on-line services. It installs in ISA-bus computers taking the place of an Ethernet adapter and supports one S/T ISDN connection. Included drivers support Microsoft Windows, Windows for Workgroups and Novell NetWare. PPP support is included for interoperation with other brands of ISDN devices.

DataFire S/T Server (S1)

The DataFire S/T Server is designed to provide small companies and branch offices with high-speed LAN-to-LAN connections. It installs in network file or communications servers running Microsoft Windows NT or Novell NetWare and supports one S/T ISDN connection. In Novell NetWare 3.x environments, the DataFire server features Link Optimization. Link Optimization helps minimize line charges by preventing LAN administration traffic from opening the communications link.

DataFire/4 S/T Server (S1)

DataFire/4 server adapter is a high capacity solution designed for larger companies in need of high-speed LAN-to-LAN connections, or a central site communications hub. It installs in network file or communications servers running Microsoft Windows NT or Novell NetWare and supports four S/T ISDN connections. The ISDN B channels can be used independently for eight simultaneous 64Kbps sessions or can be aggregated for higher speed connections. Multiple adapters can be installed in a single server to achieve the required number of ISDN connections. In Novell NetWare 3.x environments, the DataFire server features Link Optimization.

Digi's DataFire family of ISDN adapters integrates with Microsoft and Novell operating systems to take advantage of operating system features such as routing, data compression, and security. These adapters help companies achieve additional utility from existing Microsoft and Novell servers by equipping them with remote communications capability. And, network administrators familiar with Microsoft and Novell operating systems will find Digi's ISDN adapters much easier to install and manage than unfamiliar and complicated router products. Digi's DataFire family of ISDN adapters is ideal for companies seeking cost-effective, high-speed, end-to-end remote communications solutions.



Features/Specifications

Features

Common

- Compatible with 64 Kbps, 56 Kbps, and ISDN voice circuit-switched calls
- Supports Q.931 and Q.921 (LAPD), HDLC and proprietary protocols
- Compatible with all CCITT/ANSI BRI ISDN central office switches including: AT&T • 5E, Northern Telecom DMS 100, Siemens, British Telecom, NET 3 (EURO ISDN), ITR6, VN3, INS • 64
- Connects between ISDN switches using digital dial-up voice lines and digital trunking
- Data compression for greater throughput
- Transparent connection management
- Automatic fall back from circuit-switched 64 Kbps calls to 56 Kbps calls or send 56 Kbps over ISDN voice calls
- English language configuration and control
- DataFire S/T takes the place of Ethernet LAN adapters in ISA-bus computers
- Built-in ISDN protocol analyzer
- Supports multipoint ISDN bus line configurations
- Supports client LAN software for Novell, Microsoft RAS, and Internet PPP server types

DataFire S/T Client & DataFire S/T Server (S1)

- Supports two B channels and one D channel
- Client version features Point-to-Point Protocol (PPP) support for interoperability
- Client supports DOS ODI 3.11 and DOS NDIS 2.0
- Server Version includes Digi's Netware NLM Software

DataFire/4-S/T Server (S1)

- Supports up to four Basic Rate Interface (BRI) ISDN connections (eight B-channels, 4 D-channels)

Interfaces

I/O interface

- ISDN S/T interface accepts RJ-45 or RJ-11 connections
- ISDN S/T interface requires external NT1 for each BRI ISDN line

Network interface

- 8 byte I/O port, seven available addresses
- No host memory required

Bus Interface

- DataFire S/T: 8-bit ISA slot
- DataFire/4 S/T: 16-bit ISA slot

Dimensions

DataFire S/T Client & Server for ISA-bus computers: 7.3" x 4.2"

DataFire/4-S/T for ISA-bus computers: 13.5" x 4.5"

Operating System Support



MICROSOFT
WINDOWS NT

SUPPORTED MICROSOFT PRODUCTS

- Windows NT 3.5
- Windows for Workgroups 3.11

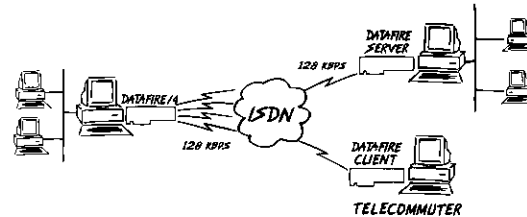


SUPPORTED NOVELL PRODUCTS

- NetWare 3.X*, 4.X

* Link Optimization supported under NetWare 3.X

Product Applications



Environmental Requirements

- Ambient temperature: 50° to 131° F (10° to 50° C)
- Relative humidity: 5% to 90% non-condensing
- Altitude: 0 to 12,000 feet (0 to 4000 meters)

Power Requirements

- DataFire S/T +5 VDC 0.5 amp, maximum
- DataFire/4 S/T +5VDC 1.5 amp, maximum

Warranty and Technical Support

Digi safeguards your buying decision with a comprehensive 5-year warranty plus unlimited telephone technical support. This is your assurance that you will have a fully functional solution for the life of your system.

